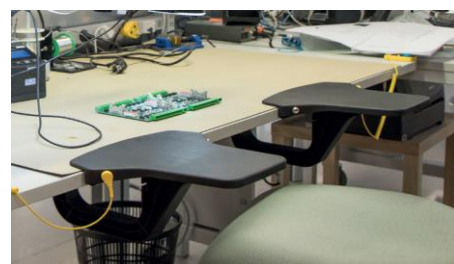
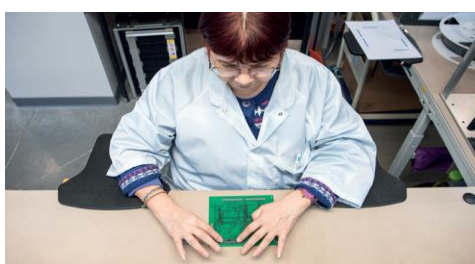
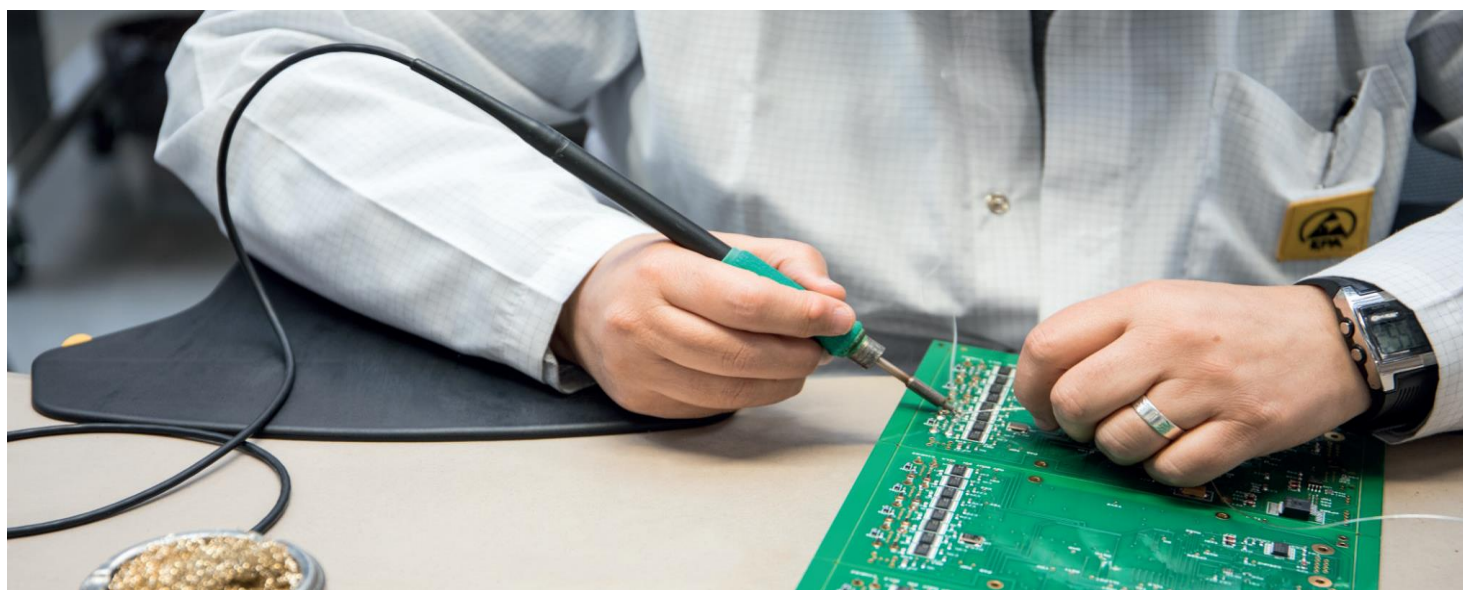




## ERGONOMIC ESD ARMREST



### DESTINATION

ESD armrest for ergonomic workstations.

Accessory that ensures a better general body posture, a better comfort of sitting and a postural recovery Tool of prevention of Musculo-Skeletal Disorders.

- Correct the posture (prevents the appearance of TMS)
- Promotes operator comfort (designed with ergonomists)
- Compatible with sensitive environments (electronics, pyrothnics, watchmaking...)
- Secure your electronic components (ESD specific material)



### PRESENTATION

1 armrest consists of: 1 shelf + 1 multi-position arm + 1 adjustment pad with screw + 1 clamping lock + 1 user manual

Dimensions of components:

- Shelf : large width 290 mm x small width 160 mm x length 280 mm
- Arms : table edges accepted  $\leq 100$  mm / offset of table runner 180 mm
- Material : Black injected techno-polymer ( strong mechanical properties, impact resistance)
- Weight of the armrest : 600 g
- Equipped with 2 male taps for grounding (earth wire not included)



## ASSEMBLY

Hold without clamping by simply arching, product supported on the worktop.

- The arm allows 3 mounting positions to be compatible with armchairs with armrests
- Compatibility assured with trays of different thicknesses (up to 40 mm)
- Locking the armrest on the table by clamping lock (included in the pack)

## AVANTAGES

Held by simple bracing = Very fast installation and high stability

- Extremely robust product: withstands 50 kg of thrust
- The use of 2 armrest replaces notched tables and / or notched shelves
- Compatible with all types of worktops / desk / tables
- Cleanable and disinfectable materials / Respect for hygiene rules
- Approach on the table of small thickness (6mm) for a good fluidity of the gestures

In accordance with the standard IEC 61340-5-1

### REFERENCE

08-0701-00006

### DESIGNATION

Ergonomic ESD armrest for workstation

